



**Bill Kostandas**  
Football NSW Head of Football Competitions & Futsal

Having a facility such as Belmore Sports Ground will no doubt grow Sydney Olympic even further by providing great development opportunities for kids to pursue their goals in football. Belmore Sports Ground is not only an excellent facility for spectators, but its beautiful playing surface will give players the confidence to play some attractive football." This in turn will attract more spectators to Sydney Olympic home games. Potentially you could even have one or two A-League games played at Belmore based on its excellent spectator facilities and beautiful playing surface.



**Mark Stavroulakis**  
Football NSW Media Manager

It's great to hear that Sydney Olympic have once again been able to call upon the great facilities at Belmore Sports Ground with many NSW Premier League supporters anticipating watching great football on what is a quality surface for football. From the photos we have seen here at Football NSW the pitch looks like it will be one of the best grounds currently going around in the NSW Premier League which can only bode well for the players, coaches and spectators of this wonderful game of ours playing at Belmore. The re-development of Belmore Sports Ground with the financial assistance of the Labour Government along with Canterbury Council who are set to provide \$5.9 million to the venue will only better the standard of facilities used by the Blues. With new change rooms, a furnished gym, upgrade of 2 playing fields outside the ground, new admin offices as well as improved facilities inside the stadium, the future looks bright for Belmore Sports Ground and Sydney Olympic. Congratulations to Sydney Olympic for getting the pitch in order.

**Troy McColl**  
Football NSW Competitions Coordinator

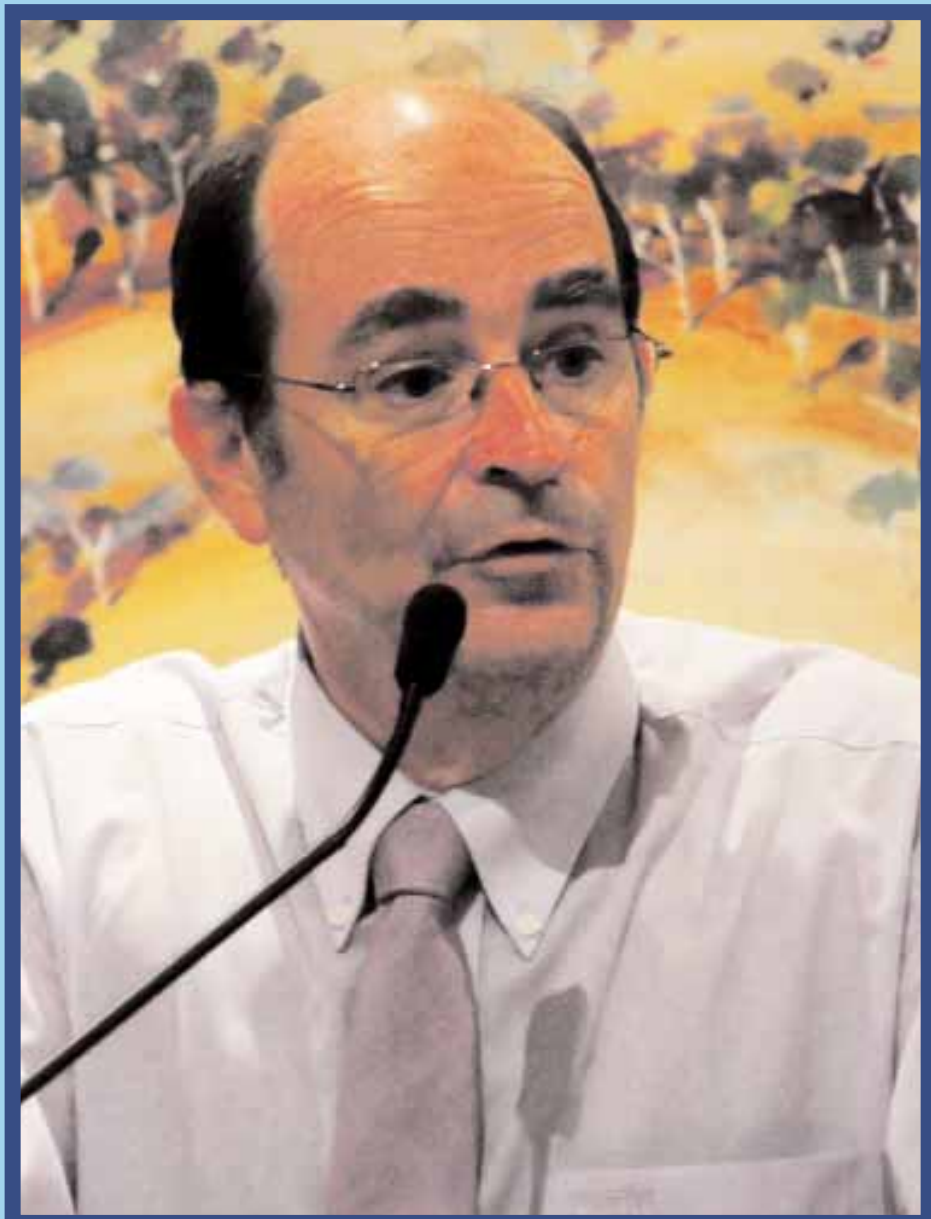
Football NSW are working with Sydney Olympic to assist the club in its ongoing re-development plans at Belmore Sports Ground. Belmore Sports Ground has a long history of supplying a quality venue for football purposes and once the developments are completed it will be one of the most prestigious football facilities in NSW. For the remainder of the season, alternative arrangements have been put in place to ensure Sydney Olympic are eligible to play out of Belmore Sports Ground with the main highlight being the quality of the surface. With the recent inclement weather around playing havoc with pitch surfaces the ability to access Belmore Sports ground for the first time in 2011 will be a welcome addition for the traveling teams. We believe the short term inconvenience is a small price to pay for the long term vision of Belmore Sports Ground.



**Bruce Da Silva**  
Football NSW Public Relations Coordinator

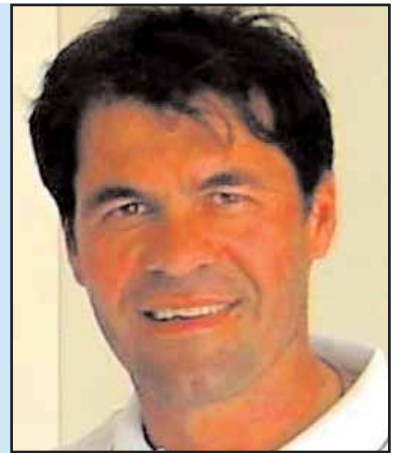
It's great to see Belmore Sports Ground once again involved with the NSW Premier League. Sydney Olympic have not only had to sacrifice home ground advantage this season, furthermore access to a quality training facility thus far this season. Belmore Sports Ground is an iconic western Sydney sporting venue and has hosted many fantastic sporting events from a range of different sports. Now with restoration complete, Belmore Sports Ground can continue to host leading sporting events, as well as house state of the art training and recovery equipment and services.

# Belmore Sports Ground Ready for take off



**Peter Katholos**  
'Let's go for the A - LEAGUE!'

Sydney Olympic in my view represents the Greek community and it's the symbol of our Greek heritage ! We all want to belong somewhere and in the case with our Greek heritage we belong to that Greek Australian environment . The club Sydney Olympic played an important in Australian football and its one of the clubs that is known well outside Australia ! It has a vast history producing so many renowned footballers and demands respects . e.t.c The only club to play at Old Trafford versus Manchester United ! The club has been competing in the state league in the past few seasons since the fold of the NSL ! In my view Sydney Olympic belongs in the A- League as it can fill all the relevant criteria required for inclusion! Bellmore sports ground has one of the best playing surfaces and Sydney Olympic has secured their home for 20 years! Sydney Olympic has the support, the people and im sure the Greek community will support the move to the league in droves! And let's not forget the Greek community boasts some of the wealthiest men in Australia! This season the team has secured the coaching duo of peter Tsenkis and peter Papythis and they have built together a team that will push for honors! The most pleasing aspect it also plays good football and is very competitive! The current board led by George Giannaros is doing an excellent job in testing times! So let's all unite and support the club that represents the Greek community! LETS GO FOR THE A - LEAGUE ! The time is right ! Sydney needs another team lets push! Languishing in the state league is not where Sydney Olympic belongs!



**Ian Holmes**  
Football NSW General Manager

It is pleasing to see after protracted negotiations and renovation of the playing surface, Sydney Olympic return to Belmore Sports Ground as the venue for second round fixtures of the NSW Premier League. While this has been a frustrating time for the supporters of the club and the playing roster of the club, Sydney Olympic has the opportunity to capitalise on its unique position in having 11 home competition fixtures being conducted consecutively. It is a chance for the club to market itself to supporters and fans and for the team to deliver on its first round performances. There can be no excuses for failure given the favourable conditions which are in place inimitably for the run home to the Championship series. No other club in the history of state league football has been in such a strong positioning. Sydney Olympic fans are known for their passion and intolerance of failure. Now is the time for the club to deliver success on the field of play. It's what Sydney Olympic fans and supporters deserve.